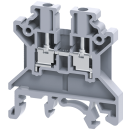


# CTS2.5UN



## 2.5 sq.mm, 5 mm thick Feed Through Terminal Block

2.5 sq.mm Feed Through Terminal Blocks are the most Versatile terminals for control, automation, instrumentation and power distribution applications. A specially designed flexible foot enables easy mounting and dismounting from the Din Rail with the help of a screw driver.

These Terminal Blocks have marker holding recesses to accept marking tags for circuit identification. Cross connection can be achieved with the aid of shorting links / sleeves & screws.

### TECHNICAL DATA

Rated Voltage	1000 V
Rated Current	24 A
Tightening Torque	0.4 Nm
Housing Material	Polymide
Product Function	Feed Through
Wire Entry Orientation	Side Entry
Mounting Possibility	DIN 32/DIN 35/DIN 35-15 Rail
Screw Size	M2.5
Operated by	Screwdriver
Rated Surge Voltage	8 KV
Pollution Degree	3

### CONNECTION DATA

Conductor Cross Section Stranded min.	0.2 mm <sup>2</sup>
Conductor Cross Section Stranded max.	2.5 mm <sup>2</sup>
Conductor Cross Section AWG/Kcmil min	22 AWG
Conductor Cross Section AWG/Kcmil max	12 AWG
Conductor Cross Section Stranded with Ferrule/Lug min	0.2 mm <sup>2</sup>
Conductor Cross Section Stranded with Ferrule/Lug max	2.5 mm <sup>2</sup>
2 Conductors with same Cross Section Stranded min	0.2 mm <sup>2</sup>
2 Conductor with same Cross Section Stranded max	1.5 mm <sup>2</sup>
Conductor Cross Section Solid min	0.2 mm <sup>2</sup>
Conductor Cross Section Solid max	4 mm <sup>2</sup>
2 Conductors with same Cross Section Stranded with TWIN Ferrule/Lug min	0.2 mm <sup>2</sup>
2 Conductor with same Cross Section Stranded with TWIN Ferrule/Lug max	1.5 mm <sup>2</sup>
Stripping Length	8 mm
Internal Cylindrical Gauge	A3

### DIMENSIONS

Height with DIN 32 rail	51.1 mm
Height with DIN 35 x 15 mm rail	53.7 mm
Height with DIN 35 x 7.5 mm rail	46.2 mm
Length	43 mm
Width (Thickness)	5 mm

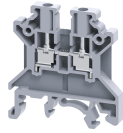
### ORDERING INFORMATION

CAT. NO.	DESCRIPTION	STD. PACK
CTS2.5UN	2.5 sq.mm Feed Through Terminal Block in Grey colour	100
CTS2.5UNBG	2.5 sq.mm Feed Through Terminal Block in Beige colour	100
CTS2.5UNBK	2.5 sq.mm Feed Through Terminal Block in Black colour	100
CTS2.5UNBU	2.5 sq.mm Feed Through Terminal Block in Blue colour	100
CTS2.5UNGN	2.5 sq.mm Feed Through Terminal Block in Green colour	100
CTS2.5UNO	2.5 sq.mm Feed Through Terminal Block in Orange colour	100
CTS2.5UNR	2.5 sq.mm Feed Through Terminal Block in Red colour	100
CTS2.5UNW	2.5 sq.mm Feed Through Terminal Block in White colour	100
CTS2.5UNY	2.5 sq.mm Feed Through Terminal Block in Yellow colour	100

### ACCESSORIES

IMAGES	CAT. NO.	DESCRIPTION	STD. PACK
	CA501-1M	Din 32 Rail unslotted 1 meter	50
	CA501-1M-S	Din 32 Rail slotted 1 meter	50
	CA501-2M	Din 32 Rail unslotted 2 meter	50
	CA501-2M-S	Din 32 Rail slotted 2 meter	50
	CA701-1M	Din 35 Rail unslotted 1 meter	50
	CA701-2M	Din 35 Rail unslotted 2 meter	50
	CA701-2M-S	Din 35 Rail slotted 2 meter	50
	CA701-1M-S	Din 35 Rail slotted 1 meter	50
	CA701-15-1M	Din 35 Rail 15 deep unslotted 1 meter	50
	CA701-15-1M-S	Din 35 Rail 15 deep slotted 1 meter	50
	CA701-15-2M	Din 35 Rail 15 deep unslotted 2 meter	50
	CA701-15-2M-S	Din 35 Rail 15 deep slotted 2 meter	50
	CA702	End Clamp in Polyamide 66 suitable for Din 32 / Din 35 / Din 35-15 Rails	50
	CA802	End Clamp in Polyamide suitable for Din 35 / Din 35-15 Rails	50

CTS2.5UN



**connectwell**  
THE RIGHT CONNECTION

ACCESSORIES

IMAGES	CAT. NO.	DESCRIPTION	STD. PACK
	EP2.5/4UN	End Plate in Grey Colour	50
	EP2.5/4UNY	End Plate in Yellow Colour	50
	EP2.5/4UNBU	End Plate in Blue Colour	50
	EP2.5/4UNR	End Plate in Red Colour	50
	PP2.5/4UN	Partition Plate in Grey colour	50
	SP2.5/4UN	Separator Plate in Grey colour	100
	CA721/2	Preassembled Internal Short Link assemblies with 2 poles	100
	CA721/3	Preassembled Internal Short Link assemblies with 3 poles	100
	CA721/4	Preassembled Internal Short Link assemblies with 4 poles	100
	CA721/10	Preassembled Internal Short Link assemblies with 10 poles	10
	CA721/100	Preassembled Internal Short Link assemblies with 100 poles	10
	CA741/2	Insulated Pre assembled Shorting Link for 2 way shorting	100
	CA741/3	Insulated Pre assembled Shorting Link for 3 way shorting	100
	CA741/4	Insulated Pre assembled Shorting Link for 4 way shorting	100
	CA741/10	Insulated Pre assembled Shorting Link for 10 way shorting	10
	CA741/100	Insulated Pre assembled Shorting Link for 100 way shorting	10
	CA717/2	External Comb Type Shorting Link available in 2 Pole	100
	CA717/3	External Comb Type Shorting Link available in 3 Pole	100
	CA717/4	External Comb Type Shorting Link available in 4 Pole	100
	CA717/10	External Comb Type Shorting Link available in 10 Pole	20
	CA703/01	Permanent Shorting Links for 2 way shorting	100
	CA704/01	Permanent Shorting Links for 3 way shorting	100
	CA705/01	Permanent Shorting Links for 4 way shorting	100
	CA731/10	Permanent Shorting Links for 10 way shorting	100
	CA731/100	Permanent Breakable Shorting Links for 100 way	10
	CA707/S/Q/01	Shorting Sleeve and Screw	100

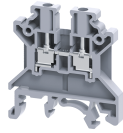
ACCESSORIES

IMAGES	CAT. NO.	DESCRIPTION	STD. PACK
	CA707/L/Q/01	Long Shorting Sleeves and Screw	100
	CA509/K5	Blank Marking Tag	100
	CA707/TS/01	Test Socket Suitable for CTS2.5UN / CTS2.5UE / CTS4UN / CTC4U / CMB4 / CTLG2.5 / CTL2.5U / CTL2.5UH / ODL4U / ODL4UA / CDLG2.5 / CMC1-2 / CMC2-2 Terminal Blocks.	100
	SCS0.5/3	Electricians Screwdriver for slotted screws	10

APPROVALS



CTS2.5UN



**connectwell**  
THE RIGHT CONNECTION

**RATINGS AS PER STANDARDS**

<b>STANDARDS</b>	<b>UL 1059</b>	<b>CSA C.22.2 No:158</b>	<b>DIN EN60947-7-1</b>
Approvals	UL	CSA	VDE
Conductor Cross Section Stranded min.	22 AWG	22 AWG	0.2 mm <sup>2</sup>
Conductor Cross Section Stranded max.	12 AWG	14.0 AWG	2.5 mm <sup>2</sup>
Rated Voltage	600 V	600 V	1000 V
Rated Current	25 A	25 A	24 A
Tightening Torque	7 lb-in	7 lb-in	0.4 Nm
<b>STANDARDS</b>	<b>IEC/EN60947-7-1</b>	<b>EN60079-7</b>	<b>IEC 60079-0 &amp; IEC 60079-7</b>
Approvals	CE	ATEX	AEx
Conductor Cross Section Stranded min.	0.2 mm <sup>2</sup>	0.2 mm <sup>2</sup>	0.2 mm <sup>2</sup>
Conductor Cross Section Stranded max.	2.5 mm <sup>2</sup>	2.5 mm <sup>2</sup>	2.5 mm <sup>2</sup>
Rated Voltage	1000 V	630 V	630 V
Rated Current	24 A	21 A	21 A
Tightening Torque	0.4 Nm	0.4 Nm	0.4 Nm
Operating Temperature Range		-40 to +85 °C	
<b>STANDARDS</b>	<b>EN60079-7</b>		
Approvals	ATEX-IECex		
Conductor Cross Section Stranded min.	0.5 mm <sup>2</sup>		
Conductor Cross Section Stranded max.	2.5 mm <sup>2</sup>		
Rated Voltage	690 V		
Rated Current	21 A		
Tightening Torque	0.4 Nm		